

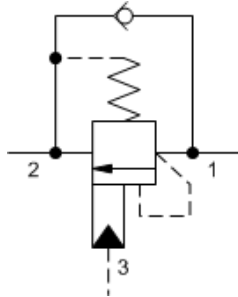
Load Holding, LoadMatch™ Cartridges

*Powered by Sun **QuickPrint**,
your on-demand, customized catalogue solution.*

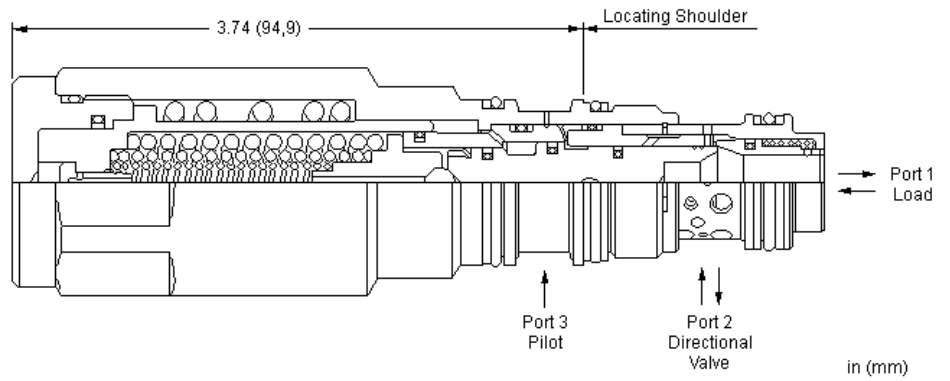
This information is subject to change without notice. Visit www.sunhydraulics.com for complete and up to date information.

MBEP	LoadMatch™ counterbalance valve1
MAEP	Atmospherically referenced LoadMatch™ counterbalance valve2
MWEP	Vented LoadMatch™ counterbalance valve3
MADP	Atmospherically referenced LoadMatch™ counterbalance valve4
MBDP	LoadMatch™ counterbalance valve5
MWDP	Vented LoadMatch™ counterbalance valve6

Series	Ports	Cavities
Series Z Cartridges 3/8-24 UNF Cartridge Thread 5 mm Valve Hex Size 11 - 14 Nm Valve Installation Torque	3-Port	T-382A
Series P Cartridges M16 Cartridge Thread 22,2 mm Valve Hex Size 27 - 33 Nm Valve Installation Torque	2-Port 2-Port (Deep) 3-Port	T-8A T-8DP T-9A
Series 0 Cartridges M16 Cartridge Thread 19,1 mm Valve Hex Size 25,4 mm Valve Hex Size 27 - 33 Nm Valve Installation Torque	2-Port 2-Port (Deep) 3-Port 3-Port 4-Port	T-162A T-162DP T-150A T-163A T-30A
Series 1 Cartridges M20 Cartridge Thread 22,2 mm Valve Hex Size 41 - 47 Nm Valve Installation Torque	2-Port 2-Port 3-Port 4-Port 4-Port 6-Port	T-10A T-13A T-11A T-21A T-31A T-61A
Series 2 Cartridges 1"-14 UNS Cartridge Thread 28,6 mm Valve Hex Size 61 - 68 Nm Valve Installation Torque	2-Port 2-Port 3-Port 4-Port 4-Port 4-Port (Dual path) 6-Port 6-Port	T-3A T-5A T-2A T-22A T-32A T-52AD T-52A T-62A
Series 3 Cartridges M36 Cartridge Thread 31,8 mm Valve Hex Size 203 - 217 Nm Valve Installation Torque	2-Port 3-Port 4-Port 4-Port 4-Port (Dual path) 6-Port 6-Port	T-16A T-17A T-23A T-33A T-53AD T-53A T-63A
Series 4 Cartridges M48 Cartridge Thread 41,3 mm Valve Hex Size 474 - 508 Nm Valve Installation Torque	2-Port 2-Port (Undercut) 3-Port 3-Port (Undercut) 4-Port 4-Port (Undercut) 4-Port 4-Port (Dual path) 6-Port 6-Port	T-18A T-18AU T-19A T-19AU T-24A T-24AU T-34A T-54AD T-54A T-64A



3-Port Non-vented, Fixed Setting



These valves are self-setting counterbalance valves which combine multiple functions in one package; reverse free flow, load, and thermal relief. The check allows free flow from the directional valve (port 2) to the load (port 1) while a direct-acting pilot function self adjusts to approximately 1.3 times the load induced pressure up to the thermal relief setting.

TECHNICAL DATA

NOTE: DATA MAY VARY BY CONFIGURATION. SEE CONFIGURATION SECTION.

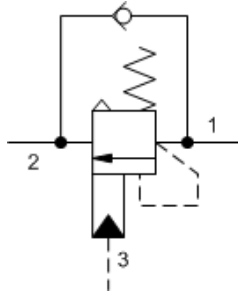
Maximum Recommended Load Pressure	See Technical Features
Factory Pressure Settings Established at	30 cc/min.
Maximum Operating Pressure	350 bar
Maximum Valve Leakage at Reseat	0,3 cc/min.
Check Cracking Pressure	1,7 bar
Reseat	≥77% of setting
Seal kit - Cartridge	Buna: 990202007
Seal kit - Cartridge	Polyurethane: 990002002
Seal kit - Cartridge	Viton: 990202006

NOTES Patents are pending for this product.

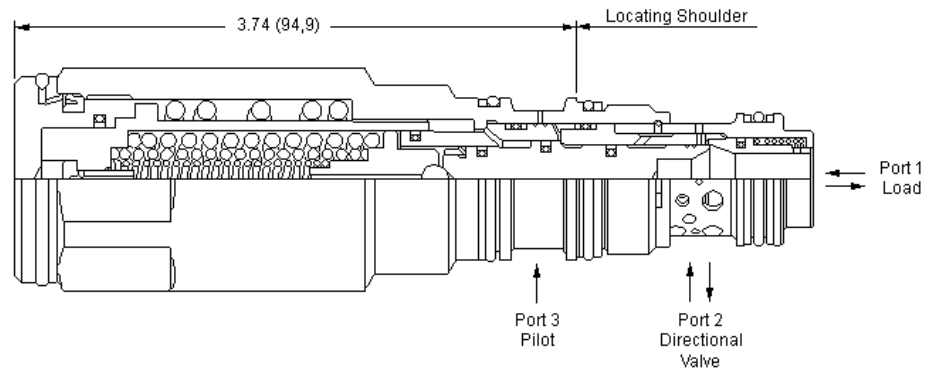
CONFIGURATION OPTIONS

Model Code Example: **MBEPDHN**

CONTROL	(D) FACTORY SET	(H) SEAL MATERIAL	(N)
D LoadMatch™	H 4000 psi (280 bar) G 6000 psi (420 bar) J 5000 psi (350 bar)	N Buna-N V Viton	



3-Port Atmospherically Referenced, Non-adjustable



in (mm)

These valves are self-setting counterbalance valves which combine multiple functions in one package; reverse free flow, load, and thermal relief. The check allows free flow from the directional valve (port 2) to the load (port 1) while a direct-acting pilot function self adjusts to approximately 1.3 times the load induced pressure up to the thermal relief setting. Backpressure at port 2 does not affect self setting performance because the spring chamber references the atmosphere.

TECHNICAL DATA

NOTE: DATA MAY VARY BY CONFIGURATION. SEE CONFIGURATION SECTION.

Maximum Recommended Load Pressure	See Technical Features
Factory Pressure Settings Established at	30 cc/min.
Maximum Operating Pressure	350 bar
Maximum Valve Leakage at Reseat	0,3 cc/min.
Check Cracking Pressure	1,7 bar
Reseat	≥77% of setting
Seal kit - Cartridge	Buna: 990202007
Seal kit - Cartridge	Polyurethane: 990002002
Seal kit - Cartridge	Viton: 990202006

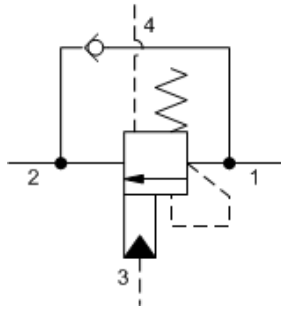
NOTES

- Patents are pending for this product.
- The pressures listed under FACTORY SET are approximate, mean values and should not be used for inspection purposes.

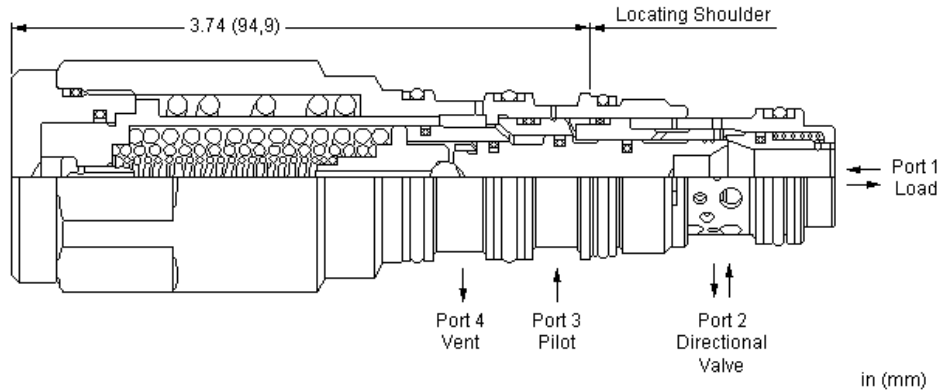
CONFIGURATION OPTIONS

Model Code Example: MAEPDHN

CONTROL	(D) FACTORY SET	(H) SEAL MATERIAL	(N) MATERIAL/COATING
D LoadMatch™	H 4000 psi (280 bar) G 6000 psi (420 bar) J 5000 psi (350 bar)	N Buna-N V Viton	N Standard Material/Coating LH Mild Steel, Zinc-Nickel



4-Port Vented, Non-adjustable



These valves are self-setting counterbalance valves which combine multiple functions in one package; reverse free flow, load, and thermal relief. The check allows free flow from the directional valve (port 2) to the load (port 1) while a direct-acting pilot function self adjusts to approximately 1.3 times the load induced pressure up to the thermal relief setting. Backpressure at port 2 does not affect self setting performance because the spring chamber references the vent (port 4).

TECHNICAL DATA

NOTE: DATA MAY VARY BY CONFIGURATION. SEE CONFIGURATION SECTION.

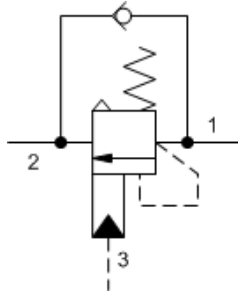
Maximum Recommended Load Pressure	See Technical Features
Factory Pressure Settings Established at	30 cc/min.
Maximum Operating Pressure	350 bar
Maximum Valve Leakage at Reseat	0,3 cc/min.
Check Cracking Pressure	1,7 bar
Reseat	≥77% of setting
Seal kit - Cartridge	Buna: 990022007
Seal kit - Cartridge	Polyurethane: 990022002
Seal kit - Cartridge	Viton: 990022006

NOTES Patents are pending for this product.

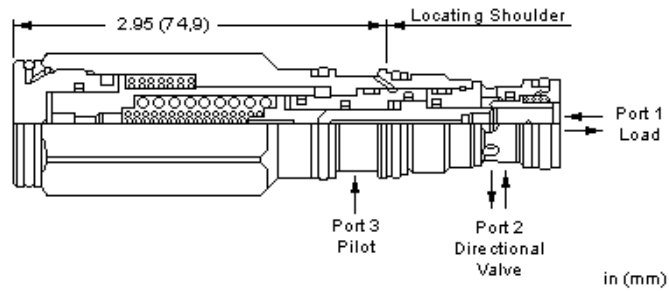
CONFIGURATION OPTIONS

Model Code Example: MWEPDHN

CONTROL	(D) FACTORY SET	(H) SEAL MATERIAL	(N) MATERIAL/COATING
D LoadMatch™	H 4000 psi (280 bar) G 6000 psi (420 bar) J 5000 psi (350 bar)	N Buna-N V Viton	Standard Material/Coating /AP Stainless Steel, Passivated



3-Port Atmospherically Referenced, Non-adjustable



These valves are self-setting counterbalance valves which combine multiple functions in one package; reverse free flow, load, and thermal relief. The check allows free flow from the directional valve (port 2) to the load (port 1) while a direct-acting pilot function self adjusts to approximately 1.3 times the load induced pressure up to the thermal relief setting.

TECHNICAL DATA

NOTE: DATA MAY VARY BY CONFIGURATION. SEE CONFIGURATION SECTION.

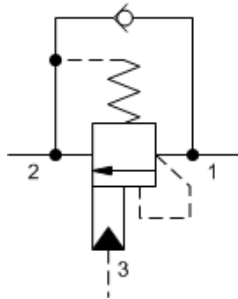
Maximum Recommended Load Pressure	See Technical Features
Factory Pressure Settings Established at	30 cc/min.
Maximum Operating Pressure	350 bar
Maximum Valve Leakage at Reseat	0,3 cc/min.
Check Cracking Pressure	1,7 bar
Reseat	≥77% of setting
Seal kit - Cartridge	Buna: 990011007
Seal kit - Cartridge	Viton: 990011006

NOTES Patents are pending for this product.

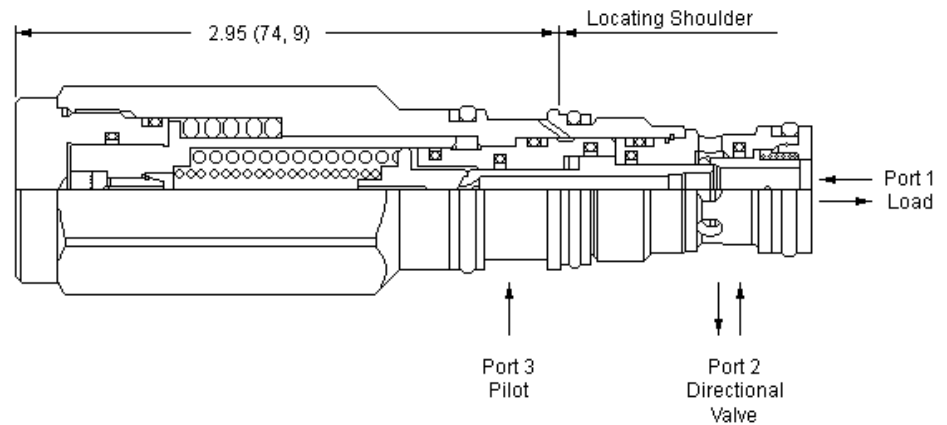
CONFIGURATION OPTIONS

Model Code Example: MADPDHN

CONTROL	(D) FACTORY SET	(H) SEAL MATERIAL	(N)
D LoadMatch™	H 4000 psi (280 bar)	N Buna-N	
	G 6000 psi (420 bar)	V Viton	
	J 5000 psi (350 bar)		



3-Port Non-vented, Fixed Setting



in (mm)

These valves are self-setting counterbalance valves which combine multiple functions in one package; reverse free flow, load, and thermal relief. The check allows free flow from the directional valve (port 2) to the load (port 1) while a direct-acting pilot function self adjusts to approximately 1.3 times the load induced pressure up to the thermal relief setting.

TECHNICAL DATA

NOTE: DATA MAY VARY BY CONFIGURATION. SEE CONFIGURATION SECTION.

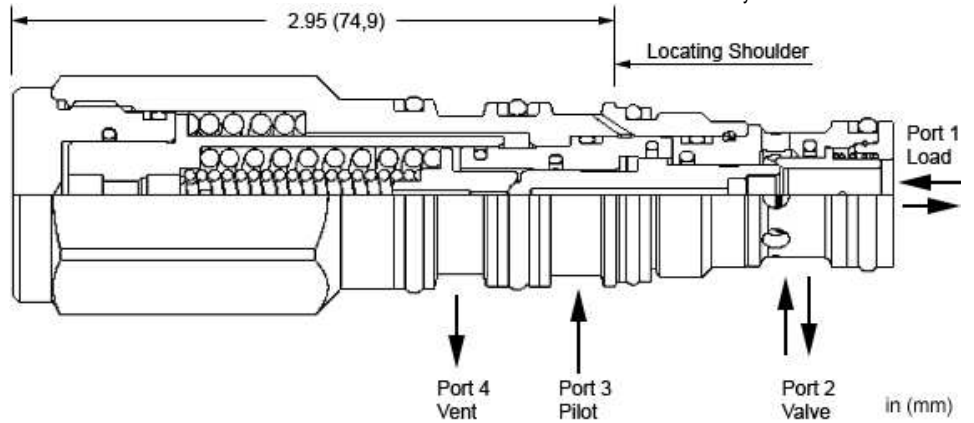
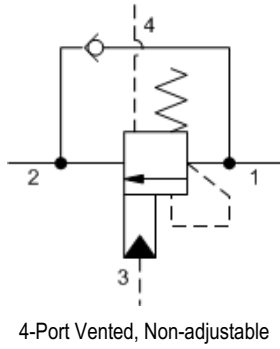
Maximum Recommended Load Pressure	See Technical Features
Factory Pressure Settings Established at	30 cc/min.
Maximum Operating Pressure	350 bar
Maximum Valve Leakage at Reseat	0,3 cc/min.
Check Cracking Pressure	1,7 bar
Reseat	≥77% of setting
Seal kit - Cartridge	Buna: 990011007
Seal kit - Cartridge	Polyurethane: 990011002
Seal kit - Cartridge	Viton: 990011006

NOTES Patents are pending for this product.

CONFIGURATION OPTIONS

Model Code Example: MBDPDHN

CONTROL	(D) FACTORY SET	(H) SEAL MATERIAL	(N) MATERIAL/COATING
D LoadMatch™	H 4000 psi (280 bar) G 6000 psi (420 bar) J 5000 psi (350 bar)	N Buna-N V Viton	Standard Material/Coating /AP Stainless Steel, Passivated



These valves are self-setting counterbalance valves which combine multiple functions in one package; reverse free flow, load, and thermal relief. The check allows free flow from the directional valve (port 2) to the load (port 1) while a direct-acting pilot function self adjusts to approximately 1.3 times the load induced pressure up to the thermal relief setting. Backpressure at port 2 does not affect self setting performance because the spring chamber references the vent (port 4).

TECHNICAL DATA

NOTE: DATA MAY VARY BY CONFIGURATION. SEE CONFIGURATION SECTION.

Maximum Recommended Load Pressure	See Technical Features
Factory Pressure Settings Established at	30 cc/min.
Maximum Operating Pressure	350 bar
Maximum Valve Leakage at Reseat	0,3 cc/min.
Check Cracking Pressure	1,7 bar
Reseat	≥77% of setting
Seal kit - Cartridge	Buna: 990021007
Seal kit - Cartridge	Polyurethane: 990021002
Seal kit - Cartridge	Viton: 990021006

NOTES Patents are pending for this product.

CONFIGURATION OPTIONS

Model Code Example: MWDPDHN

CONTROL	(D) FACTORY SET	(H) SEAL MATERIAL	(N) MATERIAL/COATING
D LoadMatch™	H 4000 psi (280 bar) G 6000 psi (420 bar) J 5000 psi (350 bar)	N Buna-N V Viton	Standard Material/Coating /AP Stainless Steel, Passivated /LH Mild Steel, Zinc-Nickel

smart SOLUTIONS for DEMANDING applications



www.sunhydraulics.com

Sun Hydraulics Headquarters
Sarasota, Florida USA
+1 941 362 1200

Sun Hydraulics Limited
Coventry England
+44 2476 217 400
sales@sunuk.com

Sun Hydraulik GmbH
Erkelenz Germany
+49 2431 80910
sales@sunhydraulik.de

Sun Hydraulics Corp. (India)
Bangalore India
+91 8028 456325
sunindiainfo@sunhydraulics.com

Sun Hydraulics Korea Corp.
Incheon Korea
+82 3281 31350
sales@sunhydraulics.co.kr

Sun Hydraulics China Co. Ltd.
Shanghai P.R. China
+86 2162 375885
sunchinainfo@sunhydraulics.com

Sun Hydraulics Corp. (S.America)
Rosario, Argentina
+54 9 341 584 3075
ventas@sunhydraulics.com